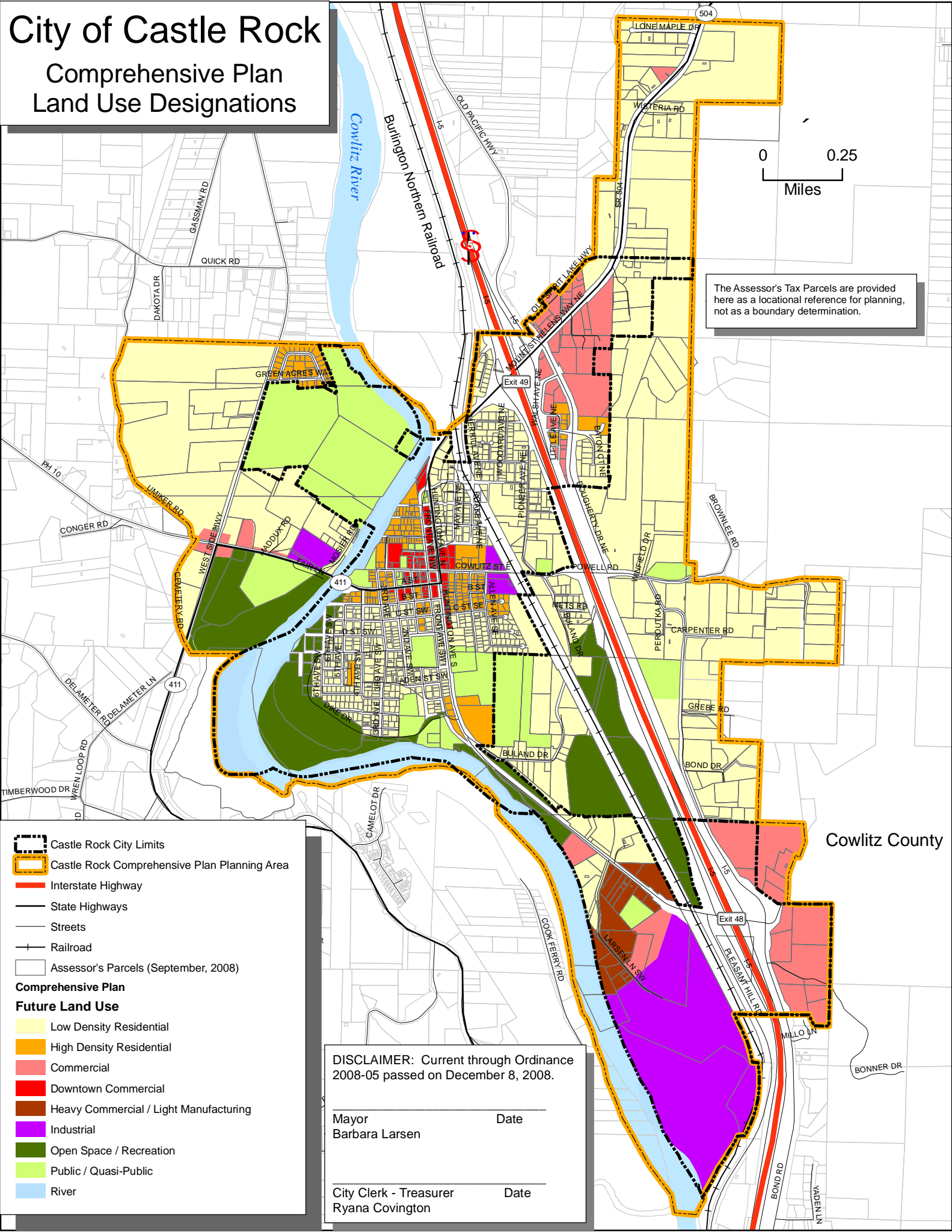


City of Castle Rock

Comprehensive Plan

Land Use Designations



The Assessor's Tax Parcels are provided here as a locational reference for planning, not as a boundary determination.

- Castle Rock City Limits
- Castle Rock Comprehensive Plan Planning Area
- Interstate Highway
- State Highways
- Streets
- Railroad
- Assessor's Parcels (September, 2008)

- Comprehensive Plan**
- Future Land Use**
- Low Density Residential
 - High Density Residential
 - Commercial
 - Downtown Commercial
 - Heavy Commercial / Light Manufacturing
 - Industrial
 - Open Space / Recreation
 - Public / Quasi-Public
 - River

DISCLAIMER: Current through Ordinance 2008-05 passed on December 8, 2008.

Mayor Date
Barbara Larsen

City Clerk - Treasurer Date
Ryana Covington

Cowlitz County